

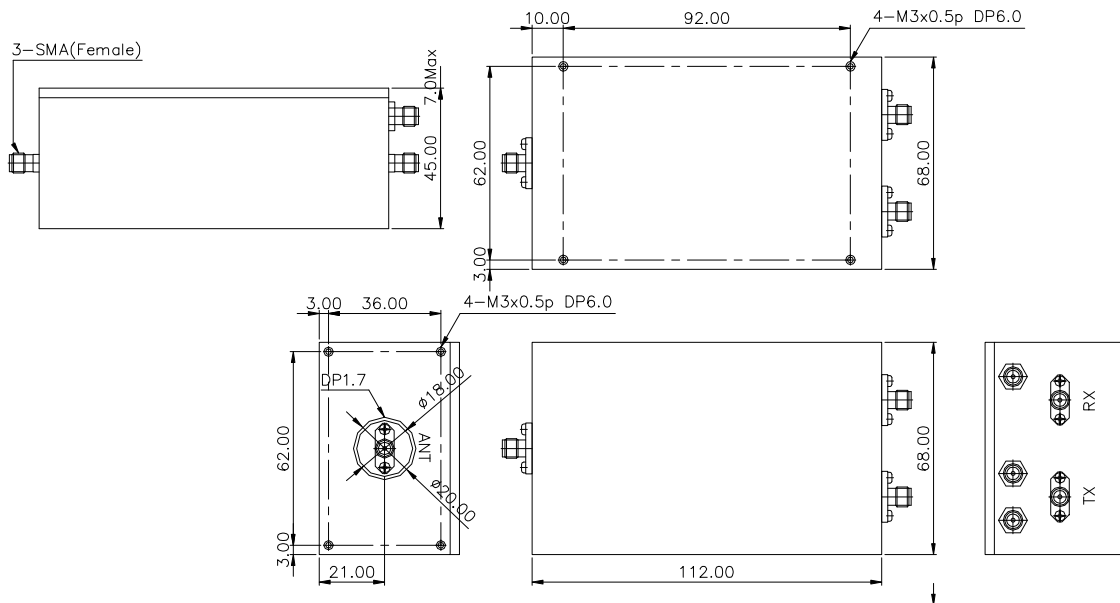
Cavity DUPLEXER IDC10318

1030Hz / 1090Hz

Features

- Cavity Duplexer
- Usable bandwidth 15 MHz each Tx. And Rx. band
- No matching / Antenna & Transmitter & Receiver Impedance 50Ω

Package Dimension




Pin Configuration	
Description	Function
RX (1082.5 ~ 1097.5MHz)	RECEIVER
ANT	ANTENNA
TX (1022.5 ~ 1037.5MHz)	TRANSMITTER

Maximum Ratings

Parameter	Unit	Minimum	Typical	Maximum
Operating Temperature Range	°C	-40	25	+70
Storage Temperature Range	°C	-40	-	+85

Electrostatics Sensitive Device (ESD)

	ITF Co., Ltd. 102-901, Bucheon Technopark 364, Samjeong-Dong, Ojeong-Gu, Bucheon-City, Gyeonggi-Do, Korea 421-809	Part No.	IDC10318	
		Rev. Date	2014-8-27	
		Rev.	AS01	1/4

Cavity DUPLEXER IDC10318

1030Hz / 1090Hz

Specification


F_o = 1030 MHz / 1090 MHz

Tx to ANT		Minimum	Typical	Maximum
Insertion loss	dB	-	0.5	0.8
Amplitude Ripple (1030 MHz +/-7.5 MHz)	dB	-	-	0.2
Pass band VSWR (1030 MHz +/-7.5 MHz)	-	-	-	1.2
Input power (1030 MHz +/-7.5 MHz)	Watt	110W > 50000 Hours, CW tone (Ta=+50°C)		
Relative Attenuation @ 1090 MHz	dB	65	70	-

ANT to Rx		Minimum	Typical	Maximum
Insertion loss (1090 MHz +/-7.5 MHz)	dB	-	0.5	0.8
Amplitude Ripple (1090 MHz +/-7.5 MHz)	dB	-	-	0.2
Pass band VSWR (1090 MHz +/-7.5 MHz)	-	-	-	1.2
Relative Attenuation @1030 MHz	dB	65	70	- - -

Notes :

- 1) All specifications are based on the matching schematic shown below, measured by Agilent Network analyzer and full 3 port calibration.
- 2) Electrical margin has been built into the design to account for the variations due to temperature drift and manufacturing tolerances
- 3) All attenuation measurements are measured absolute to insertion loss

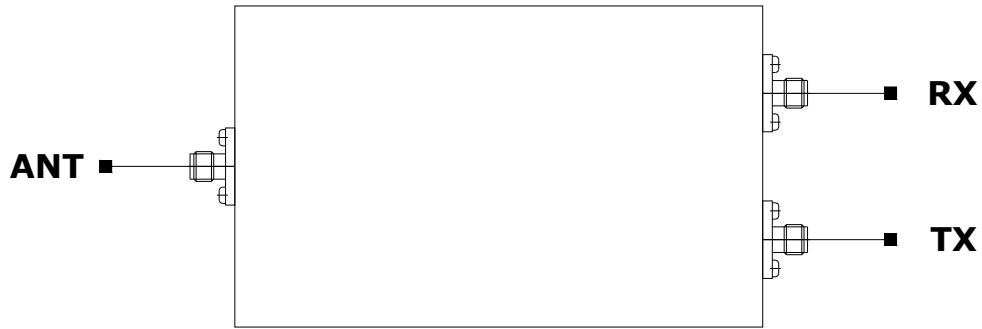
	ITF Co., Ltd. 102-901, Bucheon Technopark 364, Samjeong-Dong, Ojeong-Gu, Bucheon-City, Gyeonggi-Do, Korea 421-809	Part No.	IDC10318	
		Rev. Date	2014-8-27	
		Rev.	AS01	2/4


Cavity DUPLEXER IDC10318

1030Hz / 1090Hz

Matching Schematic

(Actual matching values may vary due to PCB layout and parasitics)



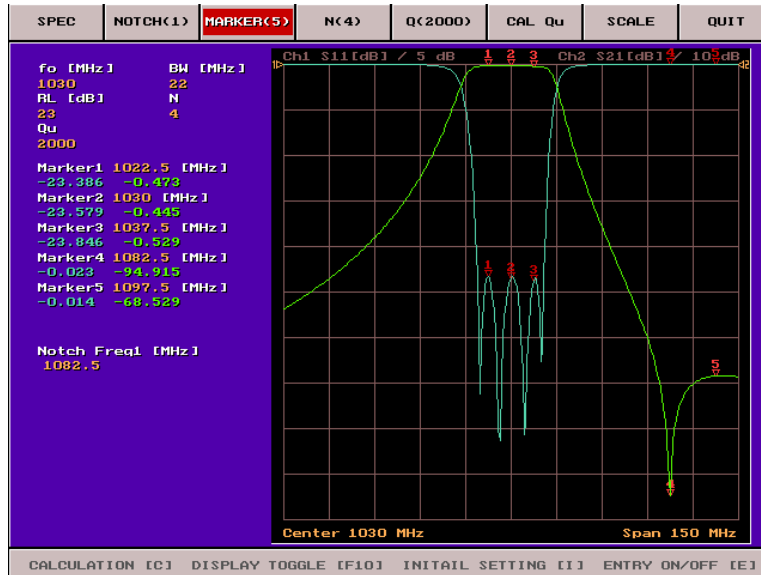
	ITF Co., Ltd. 102-901, Bucheon Technopark 364, Samjeong-Dong, Ojeong-Gu, Bucheon-City, Gyeonggi-Do, Korea 421-809	Part No.	IDC10318	
		Rev. Date	2014-8-27	
		Rev.	AS01	3/4

Cavity DUPLEXER IDC10318

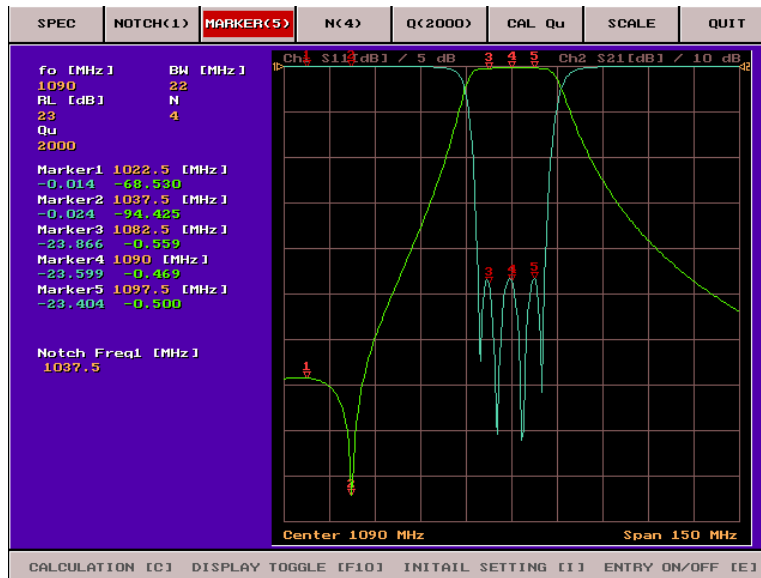
1030Hz / 1090Hz


Frequency Response

■ Tx to Ant



■ Ant to Rx



	ITF Co., Ltd. 102-901, Bucheon Technopark 364, Samjeong-Dong, Ojeong-Gu, Bucheon-City, Gyeonggi-Do, Korea 421-809	Part No.	IDC10318	
		Rev. Date	2014-8-27	
		Rev.	AS01	4/4